



Front hopper - seeding bars  
TF 1512 - BTF - BTFR - CSC





## Contents

<b>04-05</b>	Overview of the range	<b>14</b>	BTF 1030: perfectly integrated
<b>06-07</b>	Stable with more autonomy	<b>15</b>	BTFR 1000: folding versions
<b>08</b>	Feel the benefit of an intuitive seeding experience	<b>16-17</b>	BTFR 1030: precise, practical, and adaptable
<b>09</b>	Take advantage of ISOBUS compatibility	<b>18</b>	CSC 6000: boost you work output
<b>10-11</b>	SEEDFLEX seeding unit: the core of your seed drill!	<b>19</b>	Benefit from extra equipment
<b>12-13</b>	Make your life easier with VISTAFLOW valves!	<b>20-23</b>	Technical specifications

---

**TF 1512 | BTF | BTFR | CSC**

Front hopper - seeding bars

## FROM VERSATILITY TO AUTONOMY

BTF AND BTFR SEEDING BARS, WITH WORKING WIDTHS OF 3.00 TO 6.00 M, SOW AT CONSTANT DEPTHS AND ARE QUICK TO ADAPT TO WORKING CONDITIONS. WHEN COUPLED TO A KUHN POWER HARROW AND A TF 1512 FRONT HOPPER, THEY FORM A WELL-BALANCED AND HIGH-PERFORMANCE COMBINATION WITH HIGH AUTONOMY.



### HIGH WORK OUTPUT

KUHN seeding combinations optimise output by limiting downtime thanks to: a hopper capacity of 1,500 litres (2,000 litres with extension), hydraulic or centralised-manual seeding-depth adjustments, and the possibility of fitting the distribution head with VISTAFLOW valves.

### RELIABILITY AND PRECISION

BTF rigid seeding bars, BTFR folding seeding bars, and the CSC seeding combination are equipped with SEEDFLEX seeding units with offset double discs and a parallelogram mount for precise, uniform seeding.

### BALANCE AND VERSATILITY

Your comfort is our priority! Adding a TF 1512 front hopper to a KUHN seeding combination composed of a seeding bar and a power harrow balances the load between the tractor's front and rear axles.

**BTF 1030** **BTFR 1000 | 1030** **CSC 6000**

## RIGID SEEDING BARS

### BTF 1030

BTF 3030 and 4030 rigid seeding bars, with working widths of 3.00 and 4.00 metres respectively, are compatible with KUHN's HR 1020, 1030 and 1040 power harrows. The 3.00 metre version can also be coupled to a CD 3020 cultivator with discs. These combinations can work in diverse conditions such as after the plough or as part of a Min-Till method. The seeding bar is fitted to the power harrow's roller making it a perfectly integrated seeding combination with optimum ground-following capacities.



## FOLDING SEEDING BARS

### BTFR 1000

BTFR 4000, 4500, and 5000 folding seeding bars, with working widths of 4.00 to 5.00 metres, are equipped with SEEDFLEX seeding units capable of precision seeding at high speeds. They are compatible with KUHN's range of HRB 103 DR and HR 1004 DRC power harrows which have hydraulic rear lift, as an option, to facilitate coupling and uncoupling the seeding bar.



# FOLDING SEEDING BARS

## BTFR 1030

With hydraulic settings, SEEDFLEX 1000 seeding units, and direct attachment to the power harrow's roller frame, BTFR 1030 seeding bars are precise, practical, and adaptable. When combined with the HR 4530 RCS power harrow, the BTFR 4530 seeding bar has a working width of 4.50 metres. And you can work at a width of 6.00 metres when you couple the BTFR 6030 with the HR 6040 RCS power harrow.



# SEEDING COMBINATION

## CSC 6000

The CSC 6000 seeding combination, with a 6.00-metre working width, allows you to till and seed in one single pass. The seeding bar is coupled to a power harrow adapted to high-powered tractors up to 350 hp. With hydraulic seeding-depth setting and efficient VISTAFLOW valves, downtime is reduced and output increased.



## STABLE WITH MORE AUTONOMY

KUHN seeding bars are combined with the TF 1512 front hopper which can be controlled with an ISOBUS terminal or QUANTRON S-2 control box (for non-ISOBUS tractors). The front hopper has a capacity of 1,500 litres (2,000 litres with extension) which reduces downtime during seeding. It is easy to fill with a big bag due to its large opening (210 x 124 cm). It is low and compact to ensure good visibility on the road and in the field.



### Precise and regular metering

The TF 1512 front hopper is equipped with a central metering unit with volumetric splines capable of distributing all seed types, from the smallest to the largest, with the same precision and uniformity, without having to change any parts. The metering unit has a wide application-rate range from 1 to 430 kg/ha. It is also possible to disengage the agitator, no tools required, to protect delicate seeds. The seeds are then transported pneumatically, with the air flow, to the distribution head and then sent, uniformly, towards the seeding units.



### A powerful blower

The powerful blower on the hopper prevents clogging with dense volumes of seeds and at high speeds. The blower can be powered by:

- the tractor's hydraulic system (LOAD SENSING);
- or an independent hydraulic circuit (VARIO).

With the VARIO independent hydraulic unit and its regulation valve, the speed of the blower is not impacted by changes in engine speed.



### **Easy to use, fast, and practical**

To start the calibration test, it's so easy! There's a simple start/stop button next to the metering unit. Once the weight has been entered into the terminal, the motor does the rest by automatically adjusting the rotation speed of the metering unit.

### **A well-balanced combination**

Adding a TF 1512 front hopper to a KUHN seeding combination, composed of a seeding bar and a tillage tool, balances out the weight between the tractor's front and rear axles. This provides more operating comfort on the road and in the field. It is easier to manoeuvre and there is less soil compaction.

# FEEL THE BENEFIT OF AN INTUITIVE SEEDING EXPERIENCE

Compatible with  
**BTF 1030, BTFR 1000**  
**CSC 6000**

The QUANTRON S-2 terminal has proven effective on KUHN seed drills for many years. It is suited to non-ISOBUS tractors and features a colour screen and intuitively arranged navigation keys. The menu divides into different sections: seeding adjustments, machine adjustments, plot files, services, and information.



## Simply the essential

The QUANTRON S-2 terminal features numerous functionalities:

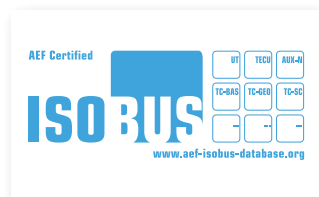
- monitoring of application rate, blower speed, low hopper level;
- work counters: surface area and quantity seeded, work time;
- tramlining control;
- calibration test assistance;
- saving of settings of 30 varieties (in addition to the common pre-recorded varieties).

## Manual application-rate modulation

It is often necessary to adapt the application rate to differences in the plot and weather conditions. The QUANTRON S-2 terminal makes this possible by implementing an increase or reduction in percentage.

# TAKE ADVANTAGE OF ISOBUS COMPATIBILITY

Compatible with  
**BTF 1030, BTFR 1000,  
BTFR 1030, CSC 6000**



VTI 60, CCI 800 AND CCI 1200: ONE TERMINAL FOR ALL KUHN MACHINES.

VTI 60, CCI 800 and CCI 1200 ISOBUS terminals are AEF-certified. They focus on three priorities: performance, visibility, and flexibility. The VTI 60 is simple to use with backlit keys. The CCI 800 and 1200 terminals are equipped with a large antiglare touchscreen capable of displaying different essential information at the same time on the same screen. They also enable automatic seeding management by GPS.



**VTI 60: the simple ISOBUS terminal**

This new VTI 60 ISOBUS terminal comes with a 5.7"/14.5cm colour touchscreen. It features 12 backlit keys for easy access to the machine functions.



**CCI 800: The compact ISOBUS terminal**

The 8" (20.3 cm) screen displays the main machine and several mini-views on the side. Click on the mini-view you wish to enlarge.



**CCI 1200: Innovative, panoramic high-performance display**

The 12.1" (30.5 cm) screen displays all essential information. Different display formats are possible: mini-view, maxi-view, double UT.

## CCI 800 AND 1200: ADVANCED FUNCTIONS FOR PRECISION FARMING!

A MULTITUDE OF APPLICATIONS COME AS STANDARD



### TECU

Provides basic tractor information



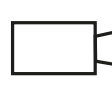
### CONTROL

Saves all completed tasks and your ISO-XLM documentation



### CONVERT

Connects to your biomass sensor



### CAMERA

Connect a camera and display live images



### HELP SYSTEM

The assistance you need

## DISCOVER THE CCI APPLICATIONS



### SECTION CONTROL

Automatic seeding management by GPS



### RATE CONTROL

Application rate modulation by GPS (SHP and ISOXML) of several products (e.g. seeds + fertiliser)



### DATA TRANSFER

Data import/export via agrirouter



### PARALLEL TRACKING

Guidance + tramlining assistance by GPS with Tramline Control function

**BTF****BTFR****CSC**

## SEEDFLEX SEEDING UNIT: THE CORE OF YOUR SEED DRILL!

SEEDFLEX seeding units are composed of offset double discs that open the furrow perfectly. The discs are mounted on a parallelogram and equipped with press wheels that control seeding depth with precision and optimise seed/soil contact.



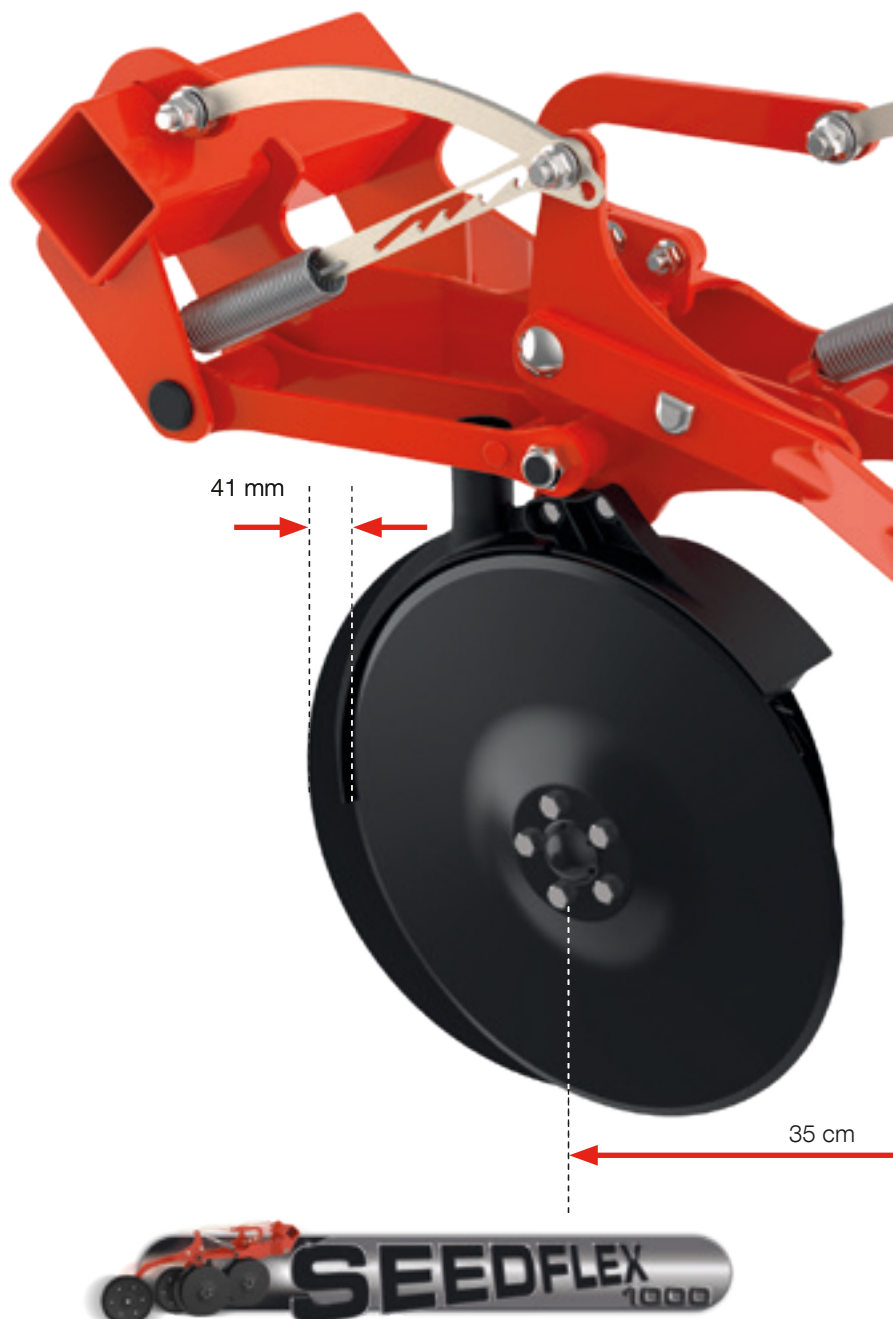
### Clean-cut furrow opening

The large double discs on the SEEDFLEX unit are offset by 41 mm for perfect furrow opening. They have a small opening angle which limits soil ejection in the row and make furrow closing easy.



### Fast and precise seeding in any conditions

SEEDFLEX seeding units are positioned in 2 rows spaced at 35 cm. This facilitates smooth passage in clayey soils and in plant residues. And forget greasing! SEEDFLEX bearings are lubricated for life.





### Safe seeding jobs

The SEEDFLEX 1000 seeding units on BTF 1030 and BTFR 1030 seeding bars are equipped with a safety component. If the units hit a large obstacle, the component does not break, it bends. It is easy to change and avoids having to replace the whole unit which allows you to finish the job quickly.



### Seeding depth respected, even at high speeds

Three features enable you to maintain a constant seeding depth, even when the plot is uneven: parallelogram-mounted double discs, large-diameter press wheels, and coulter-pressure adjustment up to 45 kg. A winning combination in all conditions.



### Better soil/seed contact

Press and depth-control wheels enhance soil/seed contact as well as moisture-transfer to the seed by capillary action. Seeding depth is controlled row by row which leads to optimum germination and uniform seedling emergence. The covering harrow finishes off the seedbed beautifully.



**BTF****BTFR****CSC**

# MAKE YOUR LIFE EASIER WITH VISTAFLOW VALVES!

The distribution heads on BTF, BTFR and CSC seeding bars are equipped, as standard, with VISTAFLOW valves that enable 2\*2-row tramlining. It is possible to fit VISTAFLOW valves to each row, as an option, for universal tramlining and improved monitoring for clogging.



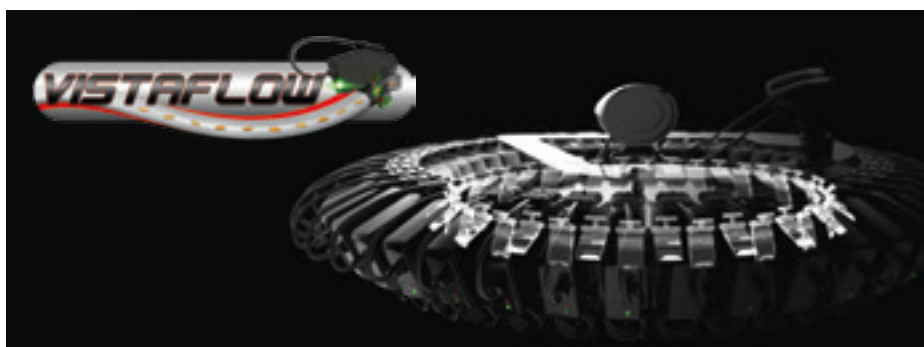
## Universal tramlining

Tramlining is now possible even if seeding and spraying widths (sprayer or fertiliser spreader) are incompatible. With this technical revolution, valves or tubes no longer have to be moved on seeding units! You can access additional functions such as half-width seed drill shut-off (right or left) and every-other-row shut-off, directly from the cab. Different configurations can be saved in the user interface for subsequent operations. The following tramlining parameters are saved: working width, track and tyre width of sprayer, self-propelled sprayer or fertiliser spreader.

## Need help?

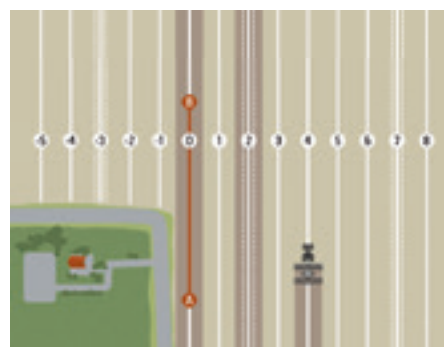
Use the KUHN VISTAFLOW configurator to find out how many valves you need to carry out tramlining, according to the working width of your seed drill and crop treatment tools (sprayer or fertiliser spreader).

Go to [www.kuhn.com](http://www.kuhn.com)



### Smart monitoring and detection of tube blockage

VISTA FLOW tramlining valves feature smart monitoring and detection systems. If a blockage occurs in the distribution head, the control terminal automatically displays a warning message, indicating the row concerned so that the necessary action can be taken rapidly. A red LED lights up on the distribution head to show the driver exactly which valve is blocked. The KUHN ISOBUS terminal is easy to use and ergonomic and provides fast access to preferred tramlining configurations as well as the best possible use of the automatic user-interface functions.



### Benefit from Tramline Control technology

Generate your tramlining lines automatically using your GPS position. The Tramline Control\* option makes all this simpler and even more precise.

\*A CCI 800 or 1200 terminal is necessary with Parallel Tracking activated

## BTF 1030: PERFECTLY INTEGRATED

BTF 3030 and 4030 rigid seeding bars have working widths of 3.00 and 4.00 metres respectively and are equipped with SEEDFLEX 1000 seeding units for precise, fast, and regular seeding. Directly mounted on the roller, they can even be coupled to a power harrow with hydraulic lift system without having to disassemble the lift system. A modular concept which simplifies changing from a cereal seeding bar to a precision seed drill.



### A perfect combination

BTF 1030 seeding bars are compatible with KUHN HR 1020, 1030 and 1040 power harrows. The 3.00 metre version can also be coupled to a CD 3020 disc cultivator for weed destruction, burying crop residues, and crumbling the top few centimetres of the soil for optimum germination. It is quick to couple and uncouple without the use of tools. It is fitted to the power harrow's roller, so it is perfectly integrated into the seeding combination and follows the ground beautifully.



### Centralised settings

Seeding depth is set centrally on both sides of the seed drill with a key and a marker. Adjusting the tillage tool does not affect seeding depth. A real time-saver when faced with increasingly short weather windows.

## BTFR 1000: FOLDING VERSIONS

BTFR 4000, 4500 and 5000 folding seeding bars, with working widths from 4.00 to 5.00 metres are compatible with power harrows in the KUHN HRB 103 DR and HR 1004 DRC ranges.



### Fast and practical coupling / uncoupling

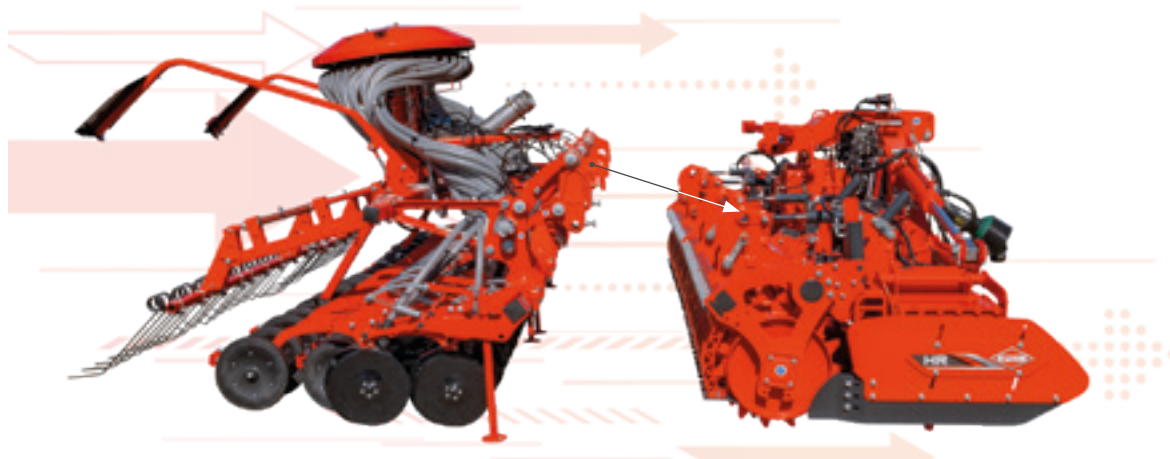
HRB 103 DR and HR 1004 DRC power harrows are equipped with a hydraulic rear lift system, as an option, to facilitate coupling / uncoupling the seeding bars in the BTFR 1000 range. It is also possible to use the power harrow solo without having to remove the seeding bar thanks to the hydraulic lift system!

### SEEDFLEX seeding units

These seeding bars are equipped with SEEDFLEX seeding units with double discs offset by 41 mm that open the furrow perfectly. The discs are mounted on a parallelogram and fitted with press wheels that control seeding depth with precision and optimise seed/soil contact which boosts germination and crop emergence. SEEDFLEX bearings are lubricated for life so require no maintenance.

## BTFR 1030: PRECISE, PRACTICAL, AND ADAPTABLE

Seeding bars in the BTFR 1030 range fit directly onto the roller frame on KUHN HR RCS power harrows. They are equipped with SEEDFLEX 1000 seeding units for unbeatable seeding precision in any plot! Optimum user comfort is provided by the hydraulic settings for the power harrow's working depth, the levelling bar, and seeding depth which are all managed from the cab directly with an ISOBUS terminal!



### Quick and easy coupling/uncoupling

Power harrows in the HR RCS range are designed to work solo or as part of a combination with a cereal or precision seeding bar. The power harrow's roller frame is equipped with linkage components that facilitate coupling/uncoupling the seeding bar. The seeding bar has hydraulic tie rods that contribute to reducing overhang. It is also possible to pivot the seeding bar to use the power harrow solo without having to remove it. With a working width of 4.50 metres, the BTFR 4530, coupled with the HR 4530 RCS, is available with row spacings of 12.5 or 15 cm. The BTFR 6030 combined with the HR 6040 RCS make it possible to work at a width of 6.00 metres.

### A seeding bar fitted to the power harrow's roller

The seeding bar is fitted directly to and guided by the power harrow's roller. This has many advantages:

- the centre of gravity is closer to the tractor;
- the seeding combination is perfectly integrated;
- the power requirement for lifting is lower;
- seeding depth is always constant, irrespective of the power harrow's working depth. Adjusting one does not affect the position of the other;
- Stability and ground following is optimum, even in stony plots.



### Hydraulic settings, as standard

To adapt the parameters of your seed drill to variations in soil texture between plots and thus achieve optimum working quality, you must be able to adjust it quickly and easily. The working depth of BTFR 1030 seeding bars can be adjusted hydraulically from the tractor cab directly. Cylinders with shims are used as a reference point. The power harrow's hydraulic unit is controlled from the front hopper's ISOBUS terminal directly.

### Safe transport

The removable carrying frame bears the weight of the combination during transport so that the GVWR and maximum load on the tractor's rear axle are respected. The large-diameter, twin wheels on the chassis can swivel. The carrying frame is easy to remove thanks to the semi-automatic coupling system. During work, you can leave it at the end of the field to reduce the weight of the combination. For road transport the hydraulic top link is set to float position to ensure smooth driving on any ground.

## CSC 6000: BOOST YOUR WORK OUTPUT

The CSC 6000 seeding combination is a high-performance solution for arable farms looking for high productivity. With its 6.00 metre working width, it allows you to till and seed in one single pass. The seeding bar is coupled to a power harrow adapted to high-powered tractors up to 350 hp.



### A removable transport system

The removable transport system, with two large-diameter wheels, is quick and easy to remove, no tools required. It allows compliance with regulations on maximum authorized loads. The stability gained by having an integrated seeding bar ensures optimum driving comfort.



### Precise and constant seeding

Precise and constant seeding depth is ensured in any conditions thanks to:

- the SEEDFLEX seeding units with offset double discs mounted on a parallelogram;
- the seeding bar fitted to the power harrow's roller which provides stability and optimum ground following;
- the hydraulic seeding-depth settings.



### 1 terminal, 4 functions!

The standard hydraulic KLH 104 circuit selector controls:

- machine folding/unfolding;
- seeding bar lift;
- seeding bar depth adjustment with the hydraulic top link;
- seeding unit coulter pressure.

One double-acting hydraulic valve is all that is required to control these four machine functions!

## BENEFIT FROM EXTRA EQUIPMENT

### TF1512 FRONT HOPPER

---



#### Front packer

The TF 1512 front hopper can be equipped with an optional 4-wheel front packer. This system reduces soil compaction from the tractor's tyres by carrying the weight of the hopper. It also provides uniform soil tamping and levelling across the entire width of the tractor which makes the power harrow's job easier.



#### Additional weights

The carrying frame and the 4-wheel front packer can be fitted with additional weights to provide optimum weight transfer. Up to 800 kg can be added to the the wheel packer and up to 1,400 kg to the carrying frame.



#### LED work lights

The front hopper is equipped with two LED work lights as standard. An additional two LED work lights can be fitted as an option to improve hopper visibility at night.

### BTF, BTFR SEEDING BARS & CSC SEEDING COMBINATION

---



#### Side and pre-emergence markers

Seeding bars can be equipped with side markers so that you can mark the soil and facilitate later passes. Pre-emergence markers are also available as an option. They allow you to mark the passes of work carried out before the emergence of seedlings.



#### SEEDFLEX wheel scrapers

Smooth running in heavy soil. SEEDFLEX scrapers allow you to seed in any conditions such as on freshly ploughed land or in clayey soil.

	TF 1512 with carrying frame	TF 1512 with front packer
Main features		
Transport width (m)	2.50	
Weight with chassis approx. (kg)	745	785
Hopper		
Capacity (with extension) (l)	1,500 (2,000)	
Payload (kg)	1,800	
Loading height (approx.) (cm)	135	165
Opening dimensions approx. (cm)	210*124	
Roll-up cover	◆	
Distribution		
Metering	Electric centralised volumetric metering unit	
Application rate (kg/ha)	1 to 430	
Slide gate to separate hopper/metering unit	◆	
Blower drive	Tractor hydraulics or independent VARIO drive	
Electronic equipment		
Terminal	QUANTRON S-2 or ISOBUS	
Other equipment		
LED work lights	◆*2 / ◇*4	
Metering-unit and hopper lighting	◆	
Front and side signalling	◆	
Retractable step	◆	
Parking stands	◆	

◆ Standard equipment ◇ Optional equipment - Not available



## KUHN PARTS



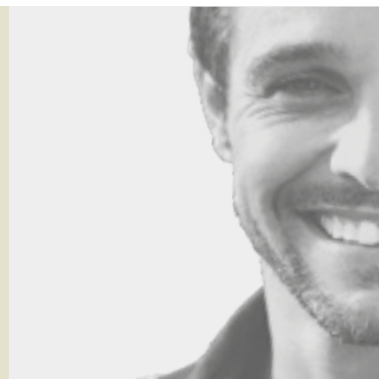
**Designed and manufactured to rival time.** KUHN foundries and forge as well as a high-level manufacturing process allow the production of spare parts to defy time. You can truly rely on our know-how and our genuine parts. Farmers benefit from our client support and logistics services via any KUHN PARTS warehouse, which provide quick and reliable repair solutions in cooperation with your nearest authorized KUHN dealer.

	BTF 3030	BTF 4030
Main features		
Working width (m)	3.00	4.00
Transport width (m)	3.00	4.00
Chassis	Rigid	
Transport height (m)	2.20	
Weight approx. (kg)	750	1,100 / 1,140
Tillage tool		
Tillage tools compatible	HR 3020 / HR 3030 / HR 3040 / CD 3020	HR 4020 / HR 4030 / HR 4040
Hopper		
Front hopper compatible	TF 1512 ISOBUS or QUANTRON S-2	
Seed delivery		
Number of rows	24	28 / 32
Spacing between rows (cm)	12.5	14.3 / 12.5
Type of seeding unit	SEEDFLEX with double discs mounted on parallelogram and fitted over 2 rows offset by 35 cm	
Press and depth-control wheels	◆	
Carbide-coated inner disc scrapers	◆	
Covering module	Covering harrow with universal tines	
Seeding-depth adjustment	Manual centralised	
Hydraulic lift of seeding bar	◆	
Seeding management		
Terminal	QUANTRON S-2 or ISOBUS	
Tramlining	VISTAFLOW valves: ◆ 2 x 2-row tramlining / ◇ Half-width shut off ◇ Monitoring and universal tramlining	

◆ Standard equipment ◇ Optional equipment - Not available

## KUHN SERVICES\*

**KUHN sos order** - Spare parts service, 24/7\*\*  
**KUHN protect+** - The choice of professionals!  
**KUHN i tech** - For ever quicker repairs!  
**KUHN finance** - Invest rationally!



\*Not all services are available in all countries. \*\* except January 1, May 1 and December 25

	BTFR 4000	BTFR 4500	BTFR 5000	BTFR 4530	BTFR 6030
Main features					
Working width (m)	4.00	4.50	5.00	4.50	6.00
Transport width (m)	3.00				
Chassis	Folding				
Transport height (m)	2.60	2.80	3.10	3.00	3.75
Weight approx. (kg)	965 / 1,040	1,070 / 1,175	1,200 / 1,300	1,240 / 1,365	1,620
Linkage category	Cat. 2			On the harrow's roller	
Tillage tool					
Power harrows compatible	HR 403 DR / HR 4004 DRC	HR 453 DR / HR 4504 DRC	HR 503 DR / HR 5004 DRC	HR 4530 RCS	HR 6040 RCS
Transport					
Removable transport system	-			Semi-automatic coupling	
Number of wheels and dimensions	-			2 wheels 10 / 75-15.3	
Hopper					
Front hopper compatible	TF 1512 ISOBUS or QUANTRON S-2			TF 1512 ISOBUS	
Seed delivery					
Number of rows	27 / 32	30 / 36	33 / 40	30 / 36	40
Spacing between rows (cm)	15 / 12.5				15
Type of seeding unit	SEEDFLEX with double discs mounted on parallelogram and fitted over 2 rows offset by 35 cm				
Press and depth-control wheels	◆				
Carbide-coated inner disc scrapers	◆				
Covering module	Covering harrow with universal tines				
Seeding-depth adjustment	Manual centralised			Hydraulic by cylinder with shims	
Hydraulic lift of seeding bar	◆				
Seeding management					
Terminal	QUANTRON S-2 or ISOBUS			ISOBUS	
Tramlining	VISTAFLOW valves: ◆ 2 x 2-row tramlining ◇ Half-width shut off ◇ Monitoring and universal tramlining				

◆ Standard equipment ◇ Optional equipment - Not available

	CSC 6000
<b>Main features</b>	
Working width (m)	6.00
Transport width (m)	2.99
Weight approx. (kg)	5 250 (version MAXIPACKER) 5 400 (version STEELLINER)
Linkage category	Cat. 3 or 4N
Hydraulic top link	◆
<b>Tillage tool</b>	
Power harrow	HR 6004 DR
Rollers compatible	MAXIPACKER or STEELLINER
Max. tractor power (kW/hp)	256 / 350
<b>Transport</b>	
Removable transport system	Semi-automatic coupling
Number of wheels and dimensions	2 wheels 10 / 75-15.3
Hydraulic folding and locking in transport position	◆
<b>Hopper</b>	
Front hopper compatible	TF 1512 ISOBUS or QUANTRON S-2
<b>Seed delivery</b>	
Number of rows	40
Spacing between rows (cm)	15
Type of seeding unit	SEEDFLEX with double discs mounted on parallelogram and fitted over 2 rows offset by 35 cm
Press and depth-control wheels	◆
Carbide-coated inner disc scrapers	◆
Covering module	Covering harrow with universal tines
Seeding-depth adjustment	Hydraulic by cylinder with shims
Hydraulic lift of seeding bar	◆
<b>Seeding management</b>	
Terminal	QUANTRON S-2 or ISOBUS
Hydraulic selector	◆ KLH 104
Tramlining	VISTAFLOW valves: ◆ 2 x 2-row tramlining ◇ Half-width shut off ◇ Monitoring and universal tramlining

◆ Standard equipment ◇ Optional equipment - Not available

# MyKUHNN

## THE LINK TO MY SUCCESS

MyKUHNN is your online space. Sign up today and find out how MyKUHNN's exclusive services will help you manage your KUHN machinery and terminals more effectively. Log on with your computer, mobile phone or tablet computer to access spare parts catalogues, technical documentation and many connected services.



## Check out the most complete range of seed drills on the market.



1. Mounted mechanical 2. Integrated mechanical 3. With front hopper 4. Integrated pneumatic 5. Folding pneumatic 6. Mounted min-till 7. Trailed min-till 8. Precision seed drills.

KUHN SAS - 4 Impasse des Fabriques - BP 50060 - F-67706 Saverne CEDEX - FRANCE  
KUHN NORTH AMERICA, INC. - 1501 West Seventh Avenue - Brodhead, WI 53520 - USA  
KUHN FARM MACHINERY PTY. LTD - 313-325 Foleys Road - Deer Park, VIC, 3023 - AUSTRALIA  
KUHN FARM MACHINERY (U.K.) LTD - Stafford Park 7 - GB TELFORD/ SHROPS TF3 3BQ

To find your nearest KUHN dealer,  
visit our website [www.kuhn.com](http://www.kuhn.com)

Information given in this document is only for information purposes and is non-contractual. Our machines are in compliance with regulations in force in the country of delivery. In our literature, and for improved illustration of certain details, some safety devices may not be in operating position. When operating these machines, these devices **must** be in position in accordance with the requirements indicated in the operator's manuals and pre-delivery instructions. RESPECT THE ROAD REGULATIONS IN FORCE AS WELL AS the tractor gross vehicle weight rating, its lift capacity and maximum load per axle and tyres. The tractor front AXLE load must always comply with the regulations of the country of delivery (In Europe, it must reach minimum 20 % of the tractor net weight). We reserve the right to change any designs, specifications or materials listed without further notice. Machines and equipment in this document can be covered by at least one patent and/or registered design. Trademarks cited in this document may be registered in one or several countries.

To protect the environment, this leaflet is printed on chlorine-free paper.  
Printed in France - 920 541 EN - 10.23 - Copyright 2023 KUHN

